

MICHELIA

28 CHEUNG FU STREET, SOUTH LANTAU



Contemporary Houses by Cheung Sha Beach in South Lantau

FOR LEASE



2-storey 3-bedroom house size ranges from **1,495 sq ft to 1,540 sq ft**, and equipped with appliances from Gaggenau, Siemens and Daikin

MICHELIA

28 CHEUNG FU STREET, SOUTH LANTAU



Garden size ranges from approx. **1,300 sq ft to 3,700 sq ft**



Car parking spaces provided for all houses



G/F
Dining and Living





1/F
Bedrooms & Bathroom



Situated at South Lantau Road and Cheung Fu Street, South Lantau

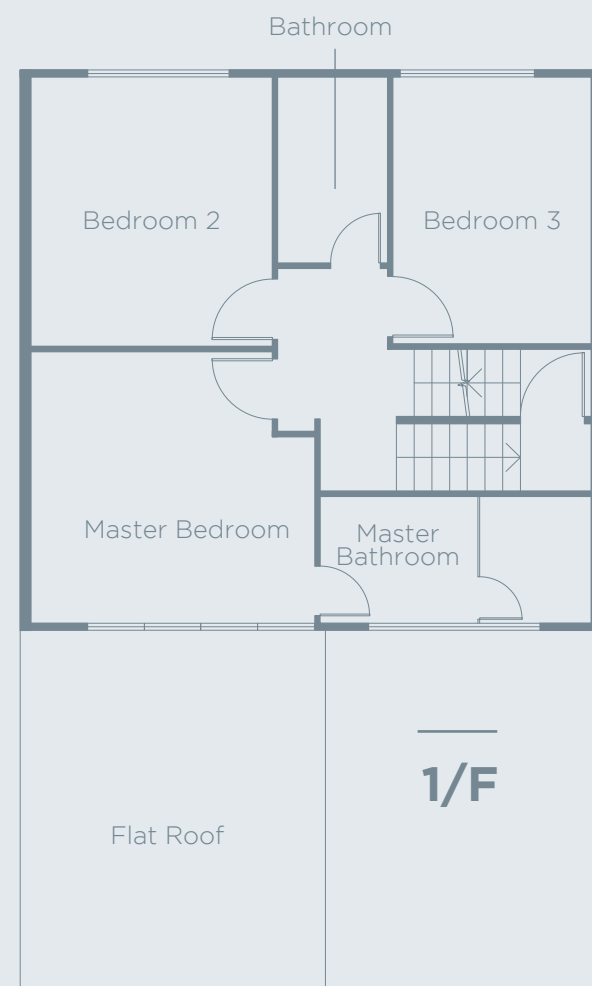
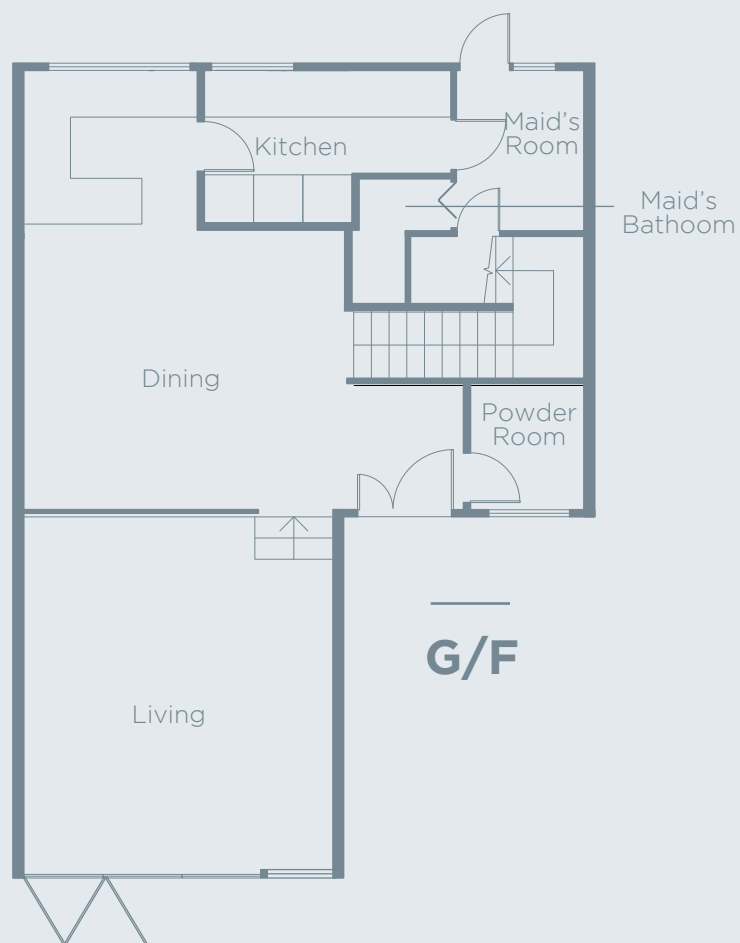
25 minutes to Tung Chung Station, Mui Wo Pier and HK International Airport

40 minutes to Central



Floor plans are for identification purpose only and are not drawn to scale.

The information contained herein is subject to change without prior notice. Swire Properties Management Limited reserves the right for the final decision. In the event of any dispute arising from the information, the cases will be finalized and concluded under the sole discretion of Swire Properties Management Limited.



Floor plans are for identification purpose only and are not drawn to scale.



HOUSE 1, HOUSE 3 AND HOUSE 5

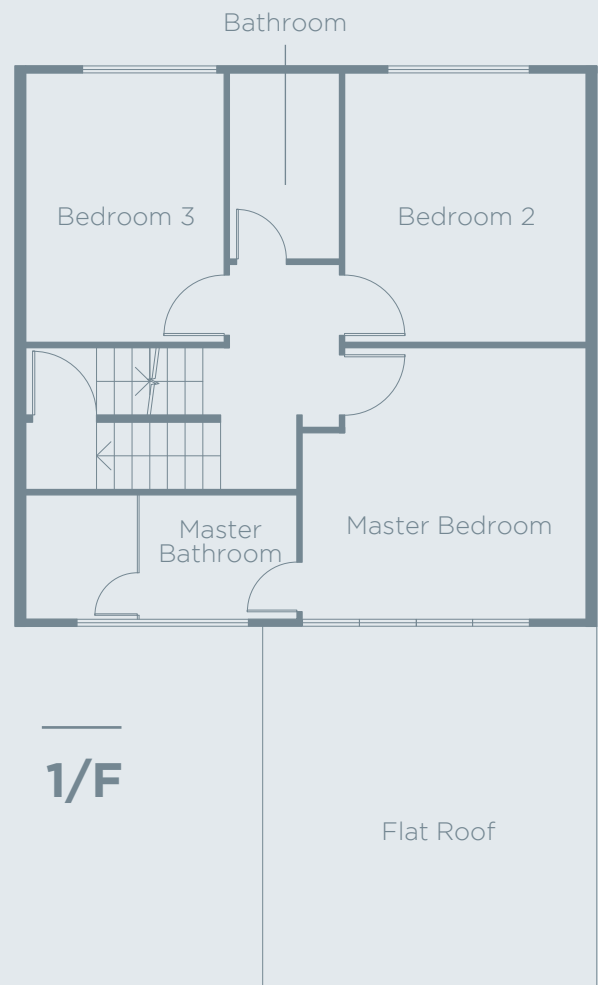
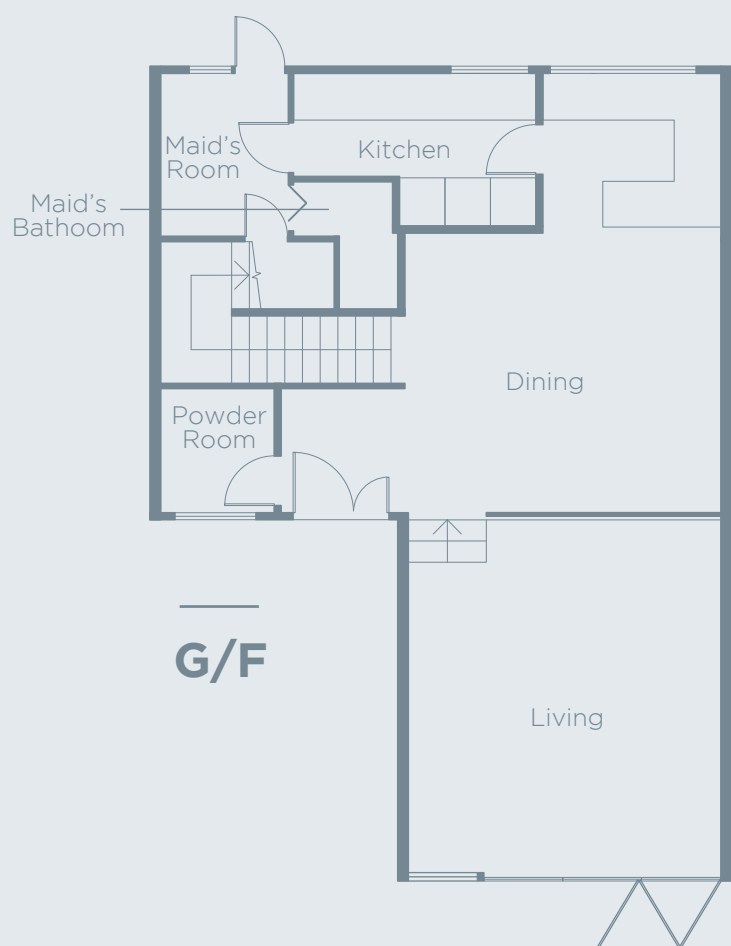
Premises: Michelia, 28 Cheung Fu Street, Cheung Sha, South Lantau

Saleable Area: 1,495 sq ft for each house

****Subject to Availability****

Please feel free to contact **Ms. Sharon Wong on 2844 8975 (Office) / 6386 8339 (Mobile)** should you have any queries.

The information contained herein is subject to change without prior notice. Swire Properties Management Limited reserves the right for the final decision. In the event of any dispute arising from the information, the cases will be finalized and concluded under the sole discretion of Swire Properties Management Limited.



Floor plans are for identification purpose only and are not drawn to scale.



HOUSE 2 AND HOUSE 4

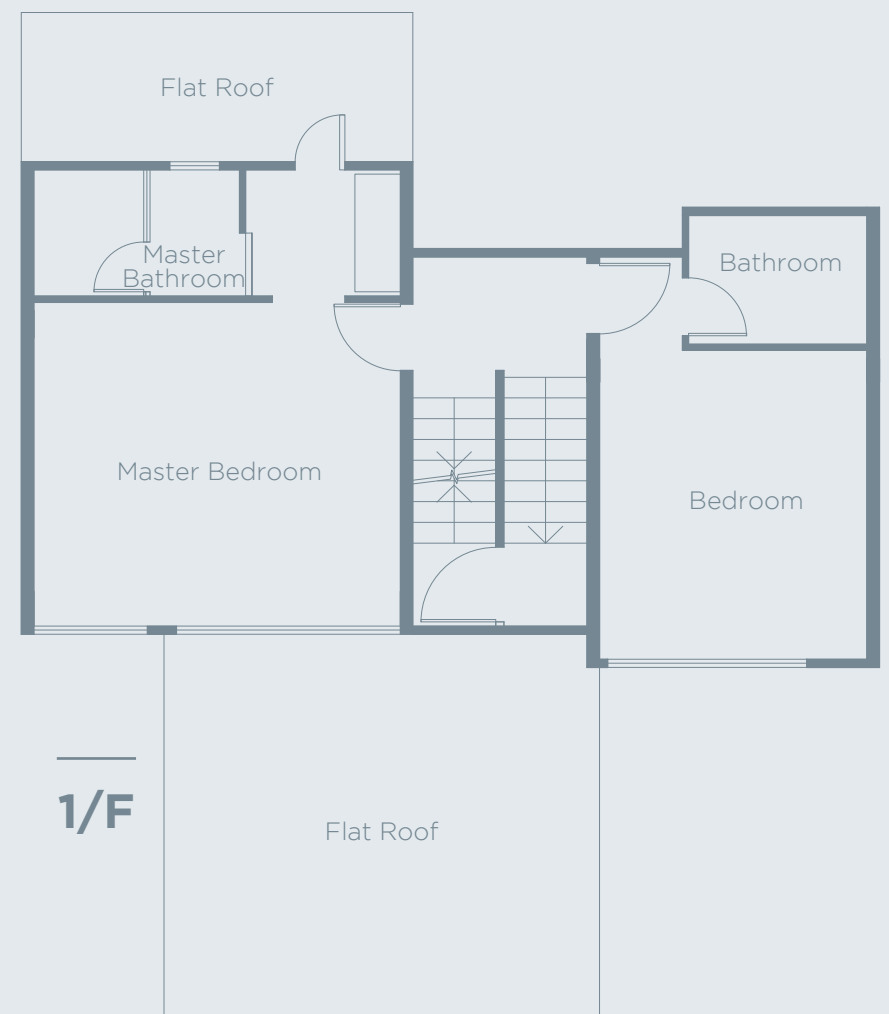
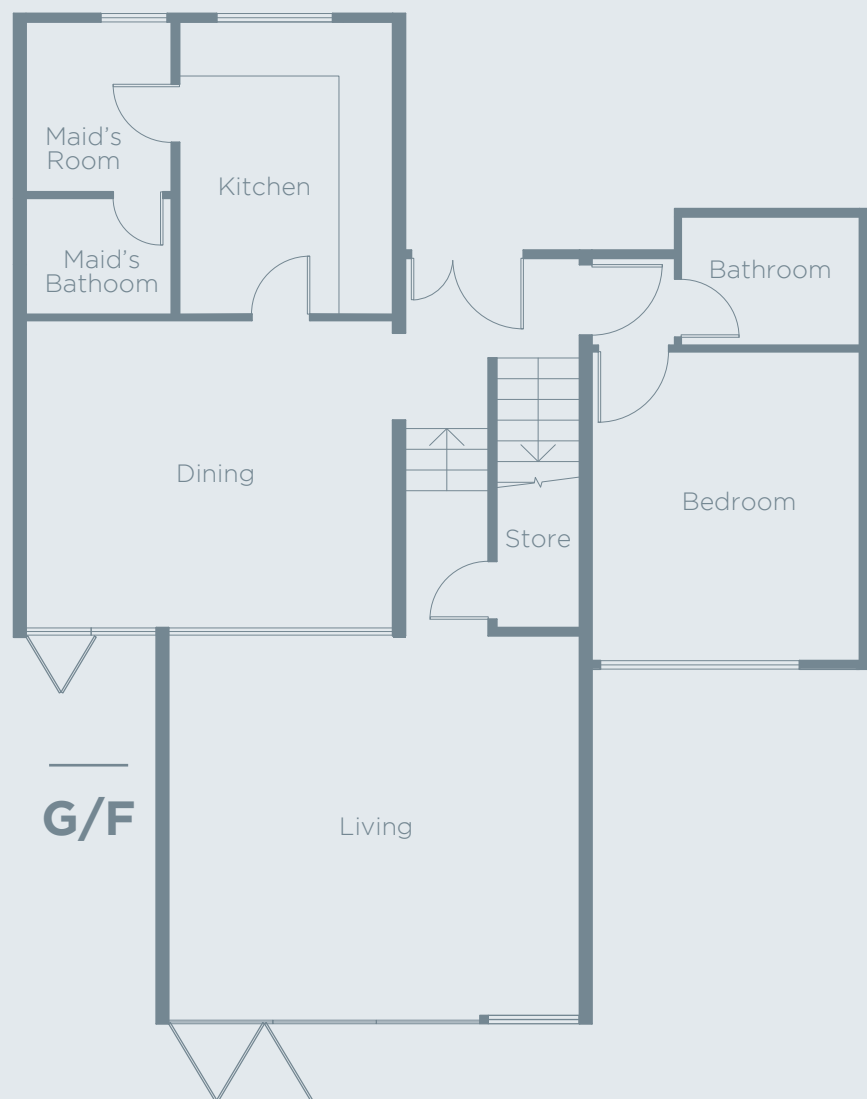
Premises: Michelia, 28 Cheung Fu Street, Cheung Sha, South Lantau

Saleable Area: 1,495 sq ft for each house

****Subject to Availability****

Please feel free to contact **Ms. Sharon Wong on 2844 8975 (Office) / 6386 8339 (Mobile)** should you have any queries.

The information contained herein is subject to change without prior notice. Swire Properties Management Limited reserves the right for the final decision. In the event of any dispute arising from the information, the cases will be finalized and concluded under the sole discretion of Swire Properties Management Limited.



Floor plans are for identification purpose only and are not drawn to scale.



HOUSE 6 AND HOUSE 8

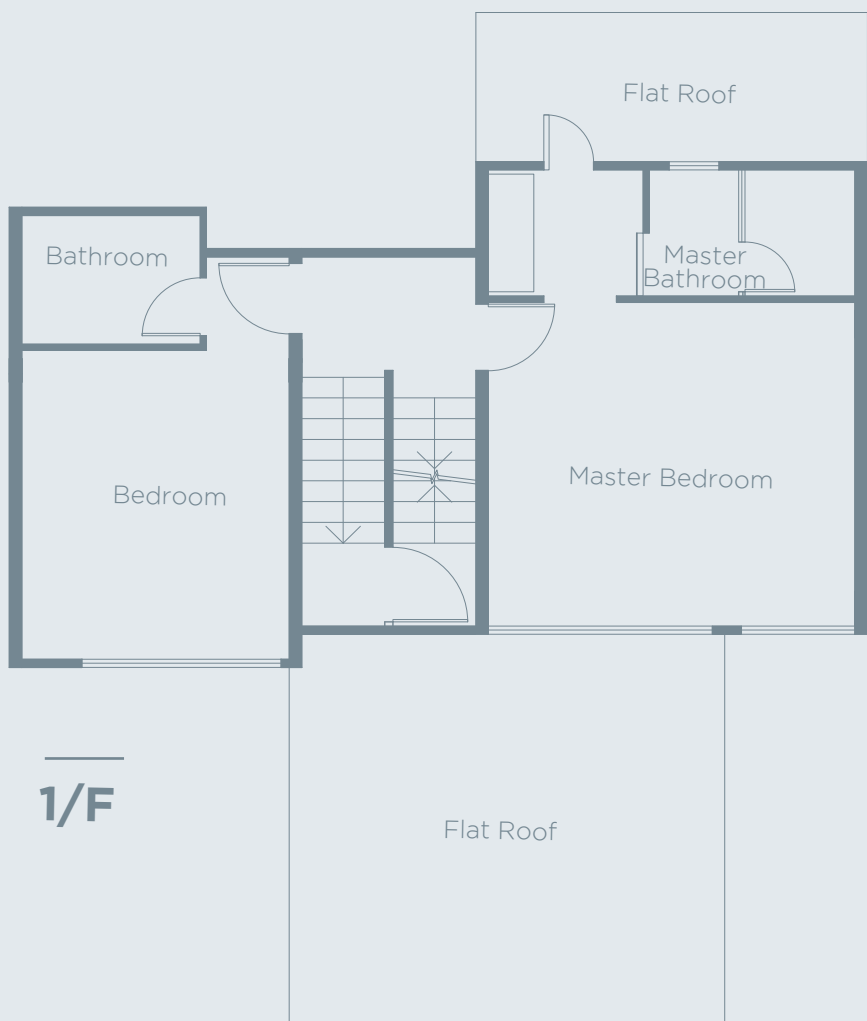
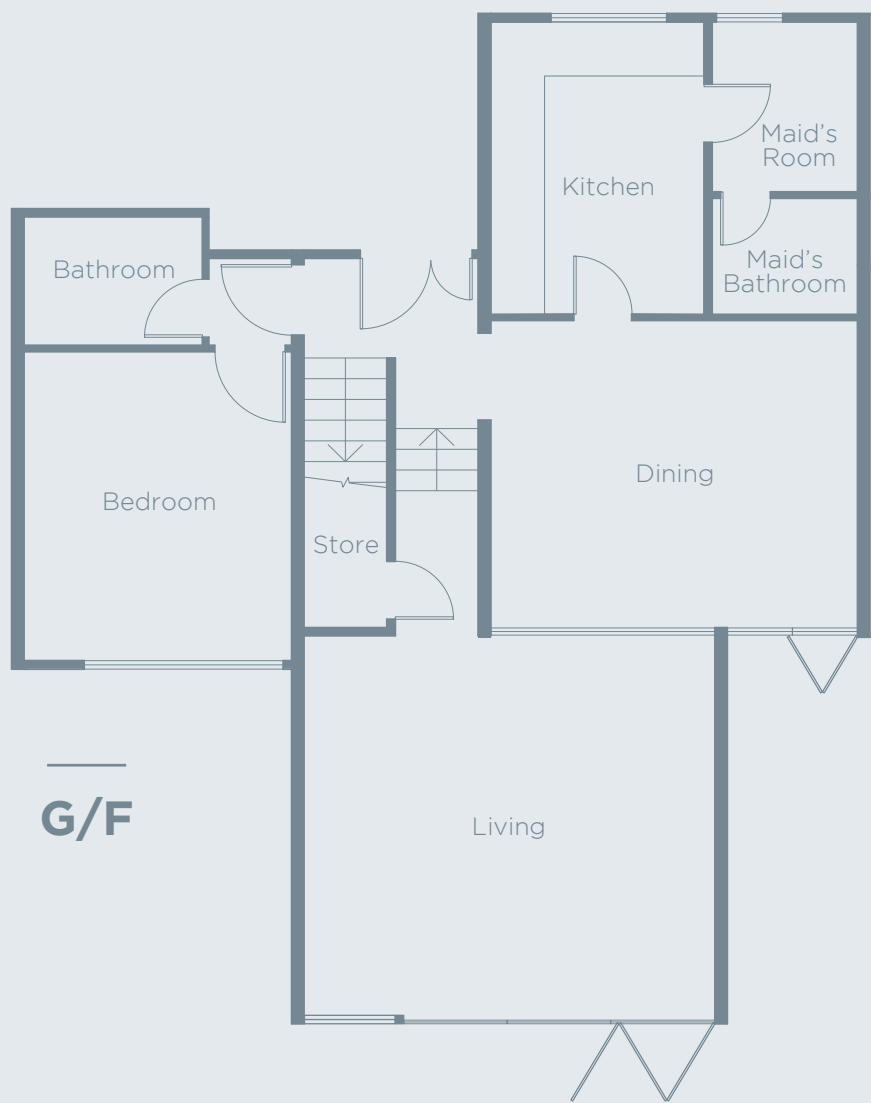
Premises: Michelia, 28 Cheung Fu Street, Cheung Sha, South Lantau

Saleable Area: 1,540 sq ft for each house

****Subject to Availability****

Please feel free to contact **Ms. Sharon Wong on 2844 8975 (Office) / 6386 8339 (Mobile)** should you have any queries.

The information contained herein is subject to change without prior notice. Swire Properties Management Limited reserves the right for the final decision. In the event of any dispute arising from the information, the cases will be finalized and concluded under the sole discretion of Swire Properties Management Limited.



Floor plans are for identification purpose only and are not drawn to scale.



HOUSE 7

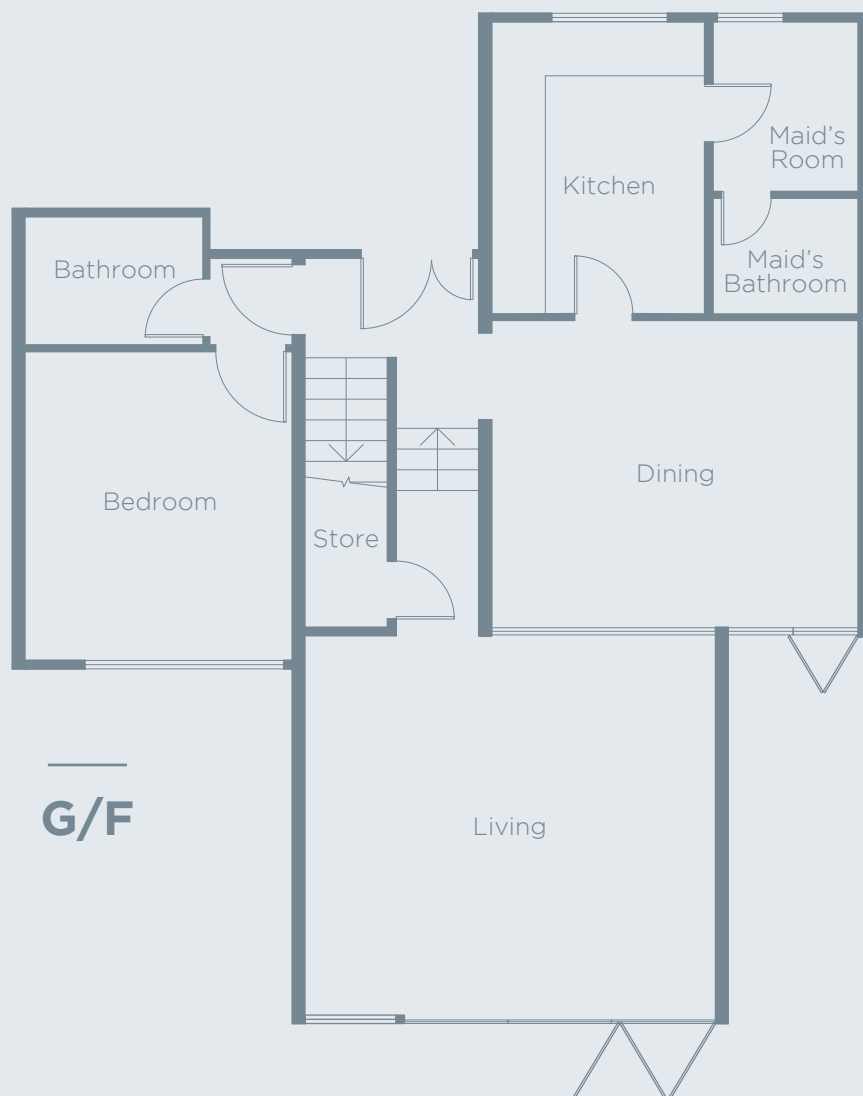
Premises: Michelia, 28 Cheung Fu Street, Cheung Sha, South Lantau

Saleable Area: 1,540 sq ft

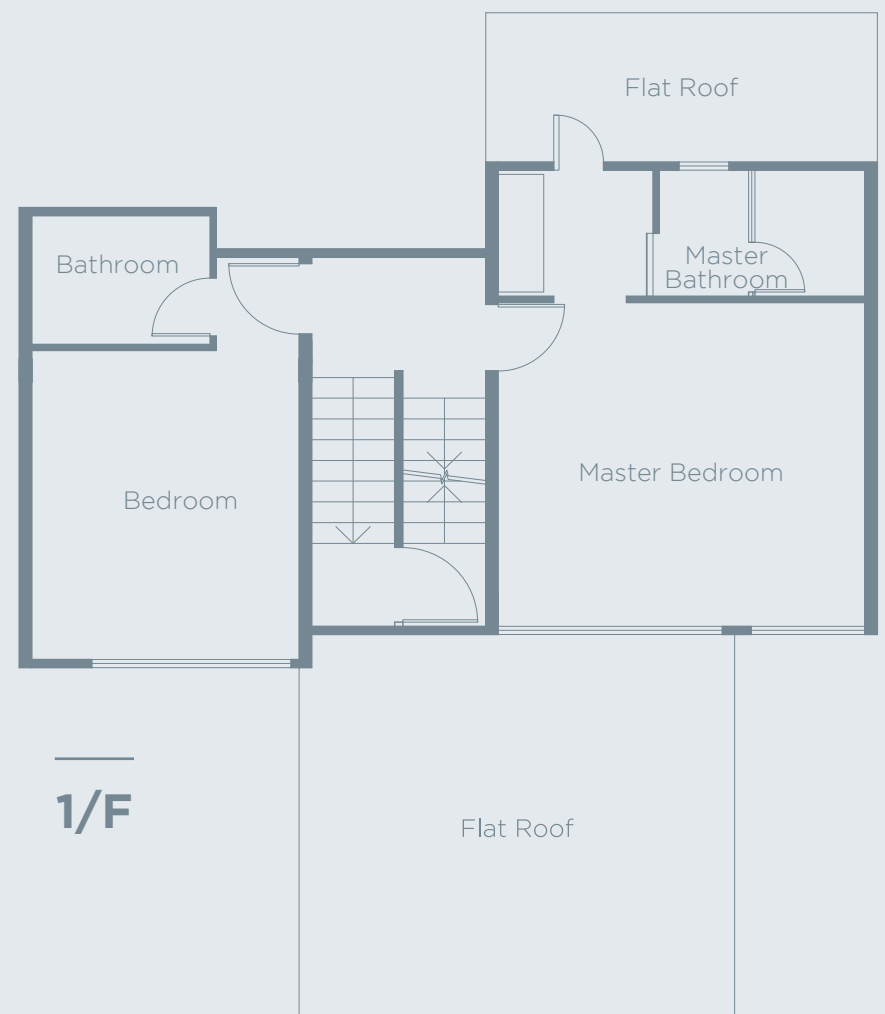
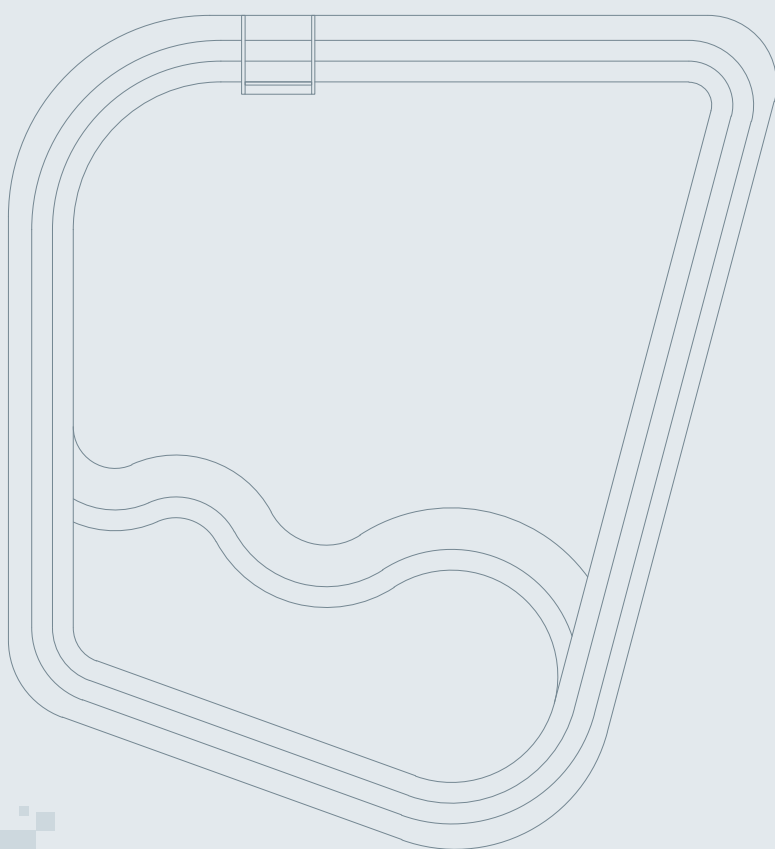
****Subject to Availability****

Please feel free to contact **Ms. Sharon Wong on 2844 8975 (Office) / 6386 8339 (Mobile)** should you have any queries.

The information contained herein is subject to change without prior notice. Swire Properties Management Limited reserves the right for the final decision. In the event of any dispute arising from the information, the cases will be finalized and concluded under the sole discretion of Swire Properties Management Limited.



G/F



1/F

Floor plans are for identification purpose only and are not drawn to scale.



HOUSE 9

Premises: Michelia, 28 Cheung Fu Street, Cheung Sha, South Lantau

Saleable Area: 1,540 sq ft

****Subject to Availability****

Please feel free to contact **Ms. Sharon Wong on 2844 8975 (Office) / 6386 8339 (Mobile)** should you have any queries.

The information contained herein is subject to change without prior notice. Swire Properties Management Limited reserves the right for the final decision. In the event of any dispute arising from the information, the cases will be finalized and concluded under the sole discretion of Swire Properties Management Limited.